

Seating System Armrests IPB, International

This Illustrated Parts Breakdown (IPB) Catalog has been compiled from the latest product information available at the time of publication. Quantum Rehab® / Pride Mobility Products® Corporation reserves the right to make changes and updates to this manual and to the product(s) it represents. Any changes, updates, or improvements to the product(s) may result in slight differences between this manual and the product that has been purchased.

An IPB is a graphically portrayed parts listing of product components which have been deemed to have serviceable, maintenance significance. When applicable, IPBs utilize “exploded” illustrations that detail serviceable components and a corresponding itemized parts list of reference numbers, part numbers, descriptions, quantities, and any applicable pricing. Most product components are incorporated into assemblies and may not be available for replacement.

Serviceable components will be noted by a callout in the illustration that will correspond to a alphanumeric reference number in the parts list. Items may also be listed in the parts list by parent assemblies. In most cases when a parent assembly is listed, there will be child parts or sub-assemblies listed under that parent.

For example: The parent assembly reference number is A1 — A5. That part contains all of the items listed as and contained within A1, A2, A3, A4, & A5. As long as these subcomponents have a callout associated with them, they can be selected for replacement or quote.

Updates to the contents of an IPB will be made on a regular basis based upon applicable product changes and enhancements. This PDF catalog has been export from the Provider based service site. The most up to date parts look up tool and ordering application is located at: prideprovider.com. Please utilize this system to enhance your user experience. It is built with highly interactive materials that are set with relational properties that will facilitate easier part look-up, more accurate parts selection, notification of onhand part availability, and quick links to related documents and products.

We welcome all questions and comments regarding the Quantum Rehab® / Pride Mobility Products® Corporation IPB systems.

Any pricing that is included in Quantum Rehab® /Pride Mobility Products® Corporation IPBs is subject to change without prior notice.

Thank you for choosing products from Quantum Rehab® and Pride Mobility Products® Corporation.

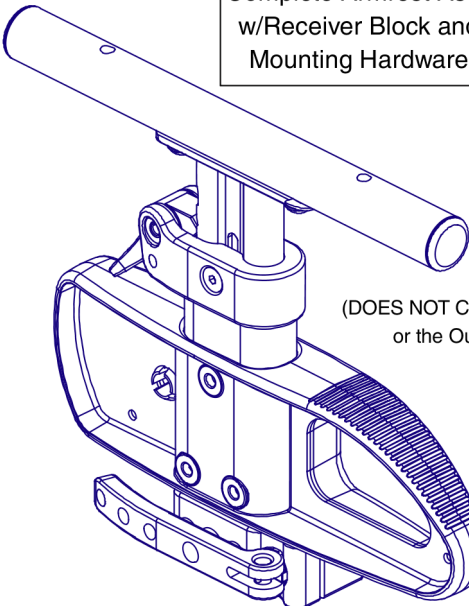


1.5. Pediatric, Single Post Height Adjustable Armrests & Armpads

Single Post Pediatric Height Adjustable Armrests, TB3	1
Appendix A:Pages Index	3
Appendix B:Parts Index	4

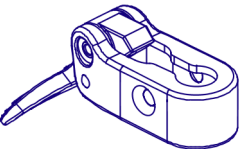
1.5. Pediatric, Single Post Height Adjustable Armrests & Armpads

Only Serviceable Components Contain Callouts

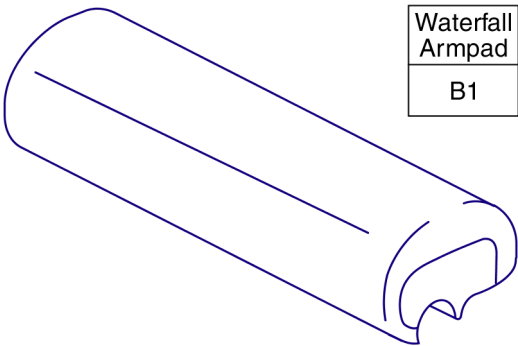


Complete Armrest Assy w/Receiver Block and Mounting Hardware	C1a	Right
	C1b	Left

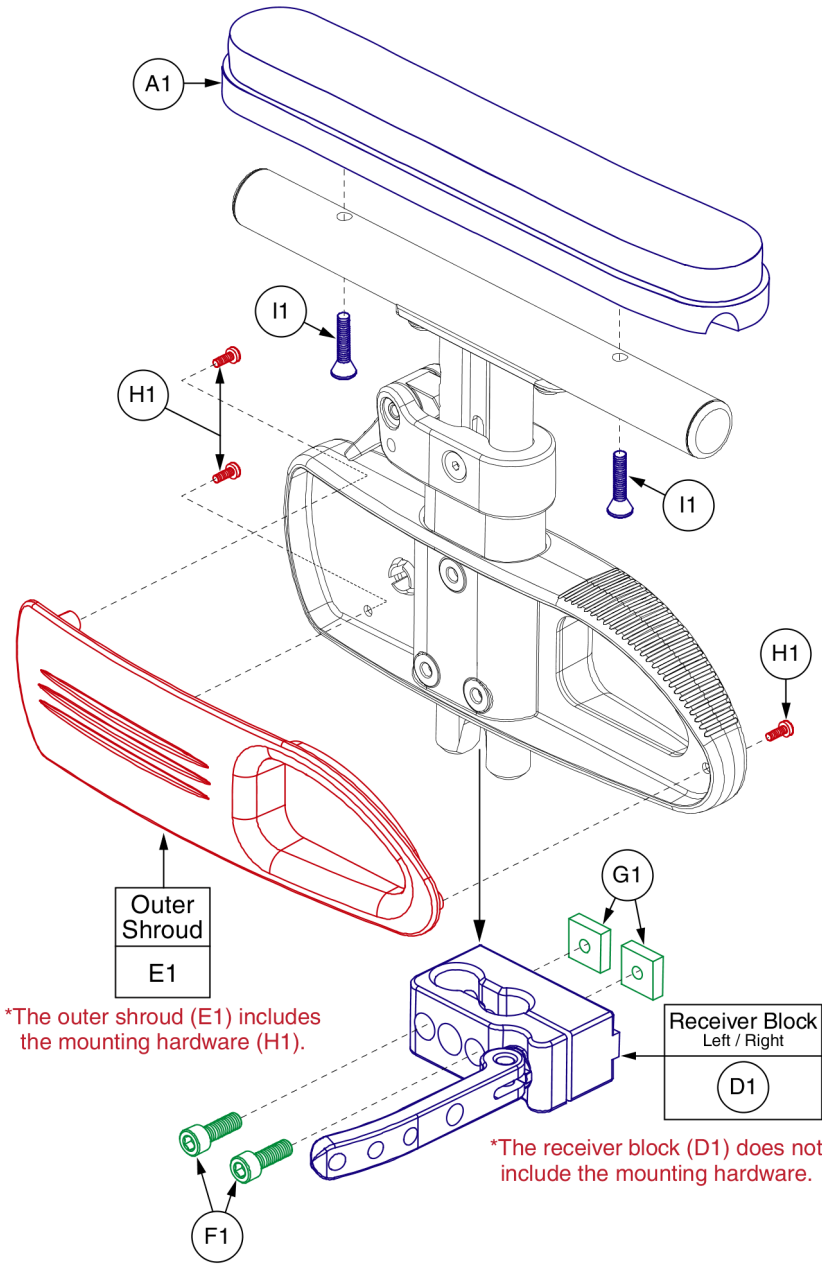
(DOES NOT Contain the Armpad
or the Outer Shroud.)



Quad Release Lever	J1a	Right
	J1b	Left



Waterfall Armpad
B1





Item	Part No.	Name	Qty
A1	SETLRAM1115	ARMREST,PAD,SHORT,QUANTUM,V2	1
B1	SETLRAM1164	ARMPAD,ASSY,WATERFALL,BLACK,9", DESK LENGTH	1
C1a	ARM142877	ARMREST,ASSY,QUANTUM PEDIATRIC SINGLE POST HEIGHT ADJUSTABLE,RIGHT,W/MOUNTING HARDWARE,TRU-BALANCE 3	1
C1b	ARM142876	ARMREST,ASSY,QUANTUM PEDIATRIC SINGLE POST HEIGHT ADJUSTABLE,LEFT,W/MOUNTING HARDWARE,TRU-BALANCE 3	1
D1	FRMASMB8586	ARMREST,ASSY,RECEIVER BLOCK,QUANTUM SINGLE POST HEIGHT ADJUSTABLE,D-1354-019	1
E1	SHDASMB5000	SHROUD,ASSY,BLACK,ARMREST INSERT,OUTER	1
F1	HDW142473	SCREW,SHCS,BLACK ZINC,M6-1.0 X 18MM,ISO 4762 CLASS 12.9,W/NYLON PATCH	2
G1	MEC131114	SQUARE NUT,T-SLOT, M6X1.0	2
H1	SCRPPH1031	SCREW, PPH,BLACK ZINC,4-40 X 3/8"	3
I1	SCRSHFH1081	SCREW,SHFH,BLACK ZINC,10-32 X 0.75",GRADE 8,W/NYLON PATCH	2
J1a	FRMASMB8831	LEVER,ASSY,MOLDED,QUAD RELEASE,RIGHT	1
J1b	FRMASMB8830	LEVER,ASSY,MOLDED,QUAD RELEASE,LEFT	1

Appendix A:Pages Index

Single Post Pediatric Height Adjustable Armrests, TB3 1

Appendix B:Parts Index

ARM142876	2
ARM142877	2
FRMASMB8586	2
FRMASMB8830	2
FRMASMB8831	2
HDW142473	2
MEC131114	2
SCRPPH1031	2
SCRSHFH1081	2
SETLRAM1115	2
SETLRAM1164	2
SHDASMB5000	2

Illustrated Parts Breakdown

USA - Quantum Rehab

401 York Avenue
Duryea, Pa 18642
www.quantumrehab.com

USA - Pride Mobility Products Corp.

182 Susquehanna Avenue
Exeter, Pa 18643
www.pridemobility.com

Canada

5096 South Service Road
Beamsville, Ontario L0R 1B3
www.pridemobility.ca
www.quantumrehab.com

Australia

20-24 Apollo Drive
Hallam, Victoria 3803
www.pridemobility.com.au
www.quantumrehab.com.au

New Zealand

38 Lansford Crescent
Avondale, Auckland 0600
www.pridemobility.co.nz

UK

32 Wedgwood Road
Bicester, Oxfordshire OX26 4UL
www.pride-mobility.co.uk
www.quantumrehab.co.uk

Netherlands

(Authorised EU Representative)

De Zwaan 3
1601 MS Enkhuizen
www.pridemobility.eu
www.quantumrehab.eu

Italy

Via del Progresso, ang. Via del Lavoro
Loc. Prato della Corte
00065 Fiano Romano (RM)
www.pride-italia.it
www.quantumrehab-italia.it

France

26 Rue Monseigneur Ancel
69800 Saint-Priest
www.pridemobility.fr
www.quantumrehab.fr

Spain

Calle Las Minas Número 67
Polígono Industrial Urtinsa II, de Alcorcón
28923 Madrid

Germany

Hövelrieger Str. 28
33161 Hövelhof
www.pridemobility.de

China

Room 508, Building #4
TianNa Business Zone
No. 500 Jianyun Road
Pudong New Area
Shanghai 201318

